

Katipo

Revolutionary New Thinking



1 HUSTLER®
Rethinking the Everyday

Katipo

Once bitten you'll be smitten! With farming at our core, and a love for machines our passion - the rethinking of our already successful sprayer range was pure instinct. The revolutionary Katipo for farmers and contractors embodies a raft of new features never seen in agricultural sprayers before - all designed to make your life easier.



Katipo 1150 with 10 metre hydraulic Sonicboom

Introducing Katipo

2
YEAR
WARRANTY

SIX KEY BENEFITS

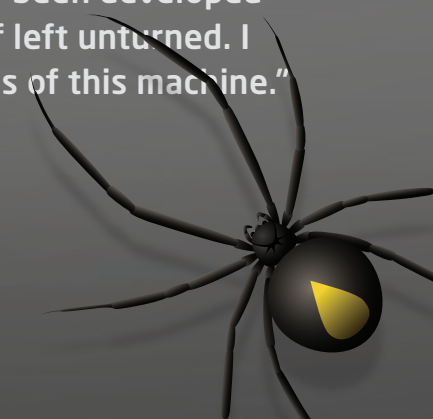
- 1 Compact and built to last** - Careful attention to detail, smart chassis/tank/pump integration has allowed Hustler to produce the toughest and most compact sprayer available today that no longer needs to be parked on a pallet. And it has a built-in SkidPlate™ protecting the vital parts from common obstacles faced when spraying.
- 2 Easy To Use** - No need to be a monkey! Katipo utilises space wisely with an Ultra-low profile design. Filling from on the ground is quick, safe and easy and with the spill catcher no longer do you have chemical down your front. A unique CoupleUp™ system makes connecting to filling stations or filling out of a creek with the Katipo pump a snap. And everything you need is handy at the left hand side.
- 3 Ultimate Agitation** - Utilising the latest computer generated flow simulation we've created the perfect flow of liquid within the tank and combined with our new MixMax™ technology you can be assured that your solution is mixed, and stays mixed.
- 4 Functional** - Katipo is loaded with practical features that help you get the job done quicker such as quicker tank emptying, a deep sump that lets you spray on steep terrain, a ViziGauge™ that is visible from the tractor seat and the ground, optional QuickFlush™ kit that lets you clean the sprayer in less than a minute, a toolbox that is quickly accessible with plenty of room for spare nozzles, filters and the controller when you park it in the shed.
- 5 Modular Design** - Katipo is modular and can have optional time savers fitted as and when you like or as your budget fits. The SlickFit™ spray valving system lets you choose how you'd prefer to control your new Katipo.
- 6 Boom!** - When it comes to booms, you're spoiled for choice! Three radical new booms, along with New Zealand's toughest, the DuraBoom™ giving you the Hustler edge.

WHAT OTHERS ARE SAYING



"The new Katipo range could have been aptly named the Smart Sprayer range, because of its simplicity and the fact it was designed with the Kiwi farmer in mind. It's also been developed and tested to a very high standard with no leaf left unturned. I was very impressed with the looks and features of this machine."

- FARM TRADER TEST, HAWKES BAY, NEW ZEALAND, KATIPO 1150



Revolutionary New Thinking

EXTEND YOUR CAPABILITIES IN THE FIELD

We combine a love of machines with creativity, an understanding of farming, and a passion for discovering better ways to do everyday tasks.


Uncompromising strength, build quality and finish, is the result of more than 10,000 hours of research and development invested into the Katipo range.


SPECIFICATIONS


Tank size	1150L, 890L, 680L
Flushing tank	Optional 100L (standard on 1150L)
Hand washing tank	18L capacity
Pump	110L/min rear mounted Comet pump
Storage	Built in toolbox
Controls	Three section Arag controls with SlickFit, and PressureLock function
Agitation	Adjustable MixMax agitation system
Gauge	ViziGauge view
Lid	Hinged 455mm lid with basket strainer
Features	UtilityBar, CoupleUp tank filling system
Booms	Choice of DuraBoom, UltraBoom, SonicBoom from 6-12 metres (Hydraulic and Manual options)
Hose reel	New bi-directional hose reel, 30, 50 or 100 metres c/w turbo gun




 THE BOOMS
DuraBoom 6 - 8 metre manual fold boom with protected quick fitting anti-drip nozzle bodies, break-away boom protection.
10 - 12 metre manual fold boom with protected quick fitting anti-drip nozzles, breakaway boom protection & self-leveling system.
SonicBoom 8 -10 metre fully hydraulic folding boom with protected nozzles and individual left and right folding with wing-tip lift.

 CONTROLS
3 section manual (standard) 5 section manual.
Electric in-cab master control with (manual section valves).
Electric in-cab 3 Section electric controls.
Automatic application rate controlling system with 3 sections.
GPS Automatic application rate controlling system 3-5 sections.

 GUIDANCE
Dual-sided foam marking system
GPS guidance, proof of placement and reporting system.

 TIME SAVERS
100L QuickFlush™ kit
5m Remote filling hose c/w suction filter (uses Katipo pump to fill).
MixMax™ adjustable agitation system, standard on 890 and 1150.
Chemical container storage compartment.
StorageBox™ A handy integrated StorageBox to take chemicals, measuring jugs, etc reduce traveling time. It neatly houses everything out of the way of mud and debris from the tractor tyre.

 SONIC BOOM
The all NEW Sonic Boom is loaded with all the features you'd ever want and has been put to the test on our custom boom thrasher system more than twice what is required to ensure it's ready and able on the job.
Folding and unfolding from the comfort of your seat gets you in and out of paddocks at a speed that creates the Sonic Boom!

OPTIONAL EXTRAS
Boomless nozzle kits up to 14 metre swath width.
Casotti boomless applicator
SonicBoom, LiquidFert application kit up-to 16m swath.



FAN AIR NOZZLES
Standard on all booms, they reduce drift by up to 90%



CONTROL OPTIONS
Manual, Electric or fully Automatic rate controlled



SUPAJET
Boomless nozzle kits with up to 14 metre swath.



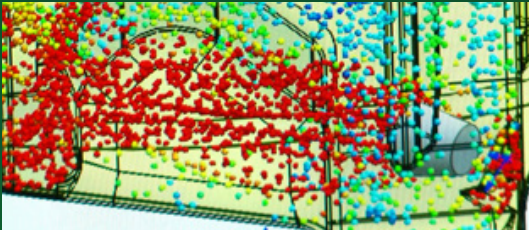
CASOTTI
12 metre swath oscillating boomless applicator



VIZIGAUGE
Calibrated tank level Gauge that is visible from 120 degrees.



STORAGE BOX
The optional StorageBox has space for containers and measuring equipment.



COMPUTER SIMULATED AGITATION
The latest flow simulation technology is used to create the ultimate tank design so the solution is mixed correctly.

2
YEAR
WARRANTY



MIXMAX AGITATOR

Standard on the Katipo 890 and Katipo 1150, optional on the Katipo 680 the fully adjustable MixMax agitation system gives you the best of both worlds - Grunty agitation for thick products. No foaming for foamy sprays. Because of it's unique position it also acts as a tank rinsing nozzle.



ULTRA LOW PROFILE

We understood the dangers of climbing onto sprayers with chemical, or to see inside the tank. So with careful tank/chassis integration we've kept the Katipo compact and ultra-low so that you can easily operate the sprayer from on the ground.



BI-DIRECTIONAL HOSE REEL

Choose either 30, 50 or 100 metres with our new bi-directional hose reel. Built in reel lock. Built in gun holder. Can be removed easily to be used with another sprayer.



DEEP SUMP

A generous sump size is all part of the design, so that you can spray on steep terrain without sucking air and leaving missed patches.



TOOLBOX AND WASH UP

Integrated into the design is a handy toolbox that is quick and easy to open and has plenty of space for spare nozzles, filters and is also handy for storing controllers when the sprayer is not in use. It has a built in 18 litre tank for clean water so that you can wash your hands once finished filling.



COUPLE-UP FILLING SYSTEM

Filling's a snap, fill as you normally would through the lid or with our unique CoupleUp™ 2" tank filling system, if you have a mixing station or trash pump you can fill directly using that pump, or you can also utilise the Katipo's own pump to fill out of a trough or stream with an optional 10m filling hose.

Katipo 1150

10 PACK / 1150 LITRE / 10 METRE

The biggest in the Katipo range, the 10 pack with our fully hydraulic 10 metre swath SonicBoom is the ultimate for productivity! The SonicBoom lets you get in and out of paddocks much quicker without even having to leave the comfort of your tractor seat. The Katipo 10 pack lets you apply more than 60 hectares in an 8 hour day of spraying and includes the 100L QuickFlush tank as standard equipment to reduce clean up time at the end of the day or when you switch between chemicals.



1150 litre capacity main tank, includes 100 litre QuickFlush™ tank standard.

Manual , electric or fully auto rate control options.

Ultra-low profile. 1600mm high when filling on the ground.

Compact design with low centre of gravity and generous room for hooking onto the tractor.

Each tank covers up to 14.3 Ha of dissolved Urea or 7.6 Ha of Roundup.*

NEW 10 metre SonicBoom, fully hydraulic and extremely fast.

CUSTOM BUILD

Need something outside a pack? No problem! Hustler's field consultants can help you custom build Katipo, so you get your desired spec, factory built.

2
YEAR
WARRANTY

Katipo Pack 680

6 PACK / 680 LITRE / 6 METRE

The popular 6 pack is ideal for smaller farms wanting to complete their own pasture spraying or liquid fertilizer applications and is capable of almost any spraying task. It features the DuraBoom, New Zealand's toughest manual folding boom with a 6 metre swath with enough capacity to cover more than 30 hectares in an 8 hour day and an application rate of 150 litres to each hectare.



680 litre capacity tank.

Adjustable valve mount for simple, ease-of-use.

Ultra-low profile. 1100mm high when filling on the ground.

Built-in SkidPlate™ protects the vital parts from common obstacles when spraying.

Each tank covers up to 8.5 Ha of dissolved Urea, or 4.5 Ha of Roundup.*

New Zealand's toughest 6 metre Duraboom™

ACCESSORY KITS

The full range of Hustler's proven Booms, Hose reels, Boomless applicators, Foam markers, GPS are available as a kit to fit to your existing sprayer (some brackets maybe required for mounting). Discuss your needs with one of our field consultants.

Katipo Pack 890

Packing a bit more punch than the 6 pack, the 8 pack with an 8 metre swath DuraBoom can cover more than 40 hectares in an 8 hour day of spraying. The Katipo packs can be enhanced with loads of options to choose from, such as the optional bi-directional hose reel for gun/spot spraying tasks.



890 litre capacity tank.

Built-in SkidPlate™ protects the vital parts from common obstacles when spraying.

Ultra-low profile. 1300mm high when filling on the ground.

Optional NEW bi-directional hose reel with built-in lock and gun holder. Available in 30, 50 or 100 metres

Each tank covers up to 11.1 Ha of dissolved Urea, or 5.9 Ha of Roundup.*

New Zealand's toughest 8 metre Duraboom™

*Application rates based on: 40 kg per Hectare of Urea applied at a water rate of 80 litres per Hectare. Roundup applied at 150 litres per Hectare.

*Application rates based on: 40 kg per Hectare of Urea applied at a water rate of 80 litres per Hectare. Roundup applied at 150 litres per Hectare.

*Application rates based on: 40 kg per Hectare of Urea applied at a water rate of 80 litres per Hectare. Roundup applied at 150 litres per Hectare.

HUSTLER INNOVATION

Hustler has been building strong, reliable balefeeders for New Zealand for more than 20 years.

At Hustler, we develop our equipment based on input from the people who use our machines. It's our practical innovations and our ability to meet changing demands that gives Hustler the edge.

Our commitment to research and development means we build equipment you can consistently rely on, year in year out, ensuring you exceptional value for money.

Hustler technology: We have adopted LEAN manufacturing techniques, robotic welding, laser and plasma cutting technology and CNC-controlled equipment to ensure the very best quality, consistency and efficiency.

The introduction of sandblasting equipment and a wet-sprayed, 2-coat system mean your Hustler product has the best possible finish.

Hustler heritage: When you invest in Hustler products you are investing in forty years of research and development, backed up by Hustler's extensive nationwide network of accredited dealers.



Our dealer network guarantees technical backup and quick replacement of parts.



CHAINLESS 8000 TRAILED 4-BALE FEEDER



CHAINLESS 4000 TRAILED 2-BALE FEEDER



CHAINLESS 2000 LINKAGE FEEDER



SL700X TRAILED 2-BALE FEEDER



SL350 LINKAGE FEEDER



SL450X LINKAGE TROUGH FEEDER



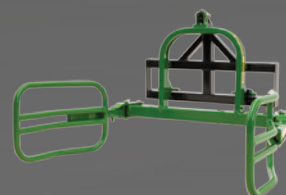
MEGA SOFTHANDS CONTRACTOR



COMPACT SOFTHANDS FARMER



CXR SOFTHANDS FARMER



SYSTEM 10 SOFTHANDS FARMER



KATIPO LINKAGE 680-1150



FOX LINKAGE 1200-2000



COLUMBIA TRAILED 2000



ADVANCE TRAILED 3000



FREE PHONE: **0800 487 853**

GLOBAL HQ: **+64 6879 7926**

www.hustlerequipment.co.nz

HUSTLER®
Rethinking the Everyday