

# ORIGINAL INSTRUCTIONS & PARTS LIST

## ***“SL-700” BALE FEEDER***



---

### **IMPORTANT**

*Read this manual BEFORE operating the Hustler Bale Feeder*

---

**HUSTLER EQUIPMENT SALES**

**2009**

## **IMPORTANT**

- Please ensure this booklet is read and understood by every operator of this machine.
- Also ensure that this booklet goes with the machine if it is resold, and is read and understood by the new owner.

## **WARNINGS**

- All persons must be kept well clear of machine in operation.
- Shut the tractor off and apply handbrake before attempting to clear feed material or cut strings / net anywhere from around the machine.
- Before attempting maintenance or any work, ensure the tractor engine is shut off and no one is near the hydraulic controls.
- Do not allow any person(s) to ride on the machine.
- Watch carefully when driving, especially the width when travelling through gateways or near objects or people.
- Ensure the jack stand is properly latched in place before driving the tractor away.
- The machine is for off-road use only. If towing on the road, the law must be adhered to. A safety chain kit purchased from HUSTLER must be used.
- Always ensure the rear loading forks are in 'transport' position when travelling (approximately 45°).
- Take care when travelling with a bale up on the rear forks as this greatly lessens the stability of the machine.
- Do not use machine on rutted ground and do not use it on more than 10° side slope.
- No alteration or modification is to be done on this machine unless undertaken by Hustler or its authorised dealers.

## **INTRODUCTION**

**Congratulations** on purchasing a HUSTLER SL-700 BALEFEEDER! Please read through this manual as it contains important information which you **need** to know.

Please take special note of the warnings on page 2, routine servicing on page 4 and trouble shooting on page 8.

Correctly maintained and operated this machine will give many years of trouble free service. Should you have any questions please contact the dealer who supplied you this machine. They have trained technicians who will be able to help you.

## **CONTENTS**

	Page
Warnings .....	2
Introduction Contents and Specifications .....	3
Maintenance .....	4
Operating Techniques .....	5
Operating Instructions .....	6-7
Trouble Shooting.....	8
<b>PARTS AND SERVICE SECTION</b>	
Drawbar Assembly.....	11
Feed Assembly .....	12-13
Boom Assembly.....	14
Tyne Frame Assembly .....	15
Latch Arm Assembly.....	16
Toplink Arm Assembly .....	17
Hook Assembly.....	18
Options .....	19
Hydraulic Schematic.....	20
Warranty .....	21

## **SPECIFICATIONS**

**FEEDER WEIGHT:** 890 kg empty.

**FEEDER CAPACITY:** 2 Bales, 1000kg maximum weight each.

**HYDRAULIC REQUIREMENTS:** Pressure: 2250 - 3000 PSI. Flow: 12 - 60 L/min (**our recommended maximum flow is 25L/min**). 2 x sets of double acting hydraulic remotes.

**HOSE CONNECTIONS:** Two hoses to inside lever which operates loading forks. (1/2" QRC's)  
Two hoses to outside lever which operates feed chains. (1/2" QRC's)

**TRACTOR SIZE:** Large enough to safely handle the bale feeder and 2 bales (1000kg maximum bale capacity).



## **WARNING!**

**BEFORE ATTEMPTING ANY MAINTENANCE, ENSURE TRACTOR ENGINE IS SHUT OFF  
AND NO ONE IS NEAR THE HYDRAULIC CONTROLS.**

## **MAINTENANCE**

(Also do this before initial operation)

- Grease all points regularly.

These are:

- 4 x main feeder bearings (do not over grease)
  - All pivot grease nipples including rear boom, latch/trip arm and cylinder pivot points.
  - Inside the hook latch contact surface.
  - On the trip reset plate by the left hand wheel.
- 
- Keep the 2 feed chains oiled. Use a non-tacky black or brown chain lube monthly.
  - Grease the wheel bearings annually or earlier depending on conditions. If the machine is travelling through water occasionally we recommend ADR High Tech Lithogrease 3 or equivalent.

After the first 10 hours of operation:

- Check wheel nuts are tight.
  - Check the nuts on the tines are tight.
  - Check draw bar bolts are tight.
  - Check grub screws in bearings are tight.
- 
- During routine servicing check that grubscrews and bolts are tight.
- 
- In a salty atmosphere keep grease on parts that are likely to rust, i.e. pins and cylinder shaft.



# **OPERATING TECHNIQUES**

## **CONNECTING BALE FEEDER ONTO TRACTOR**

- Connect the bale feeder to the drawbar of the tractor.
- If towing on road, safety chain kit must be used. A rated kit is available from HUSTLER. No other chain kit should be used. Order code: CH-TOWKIT  
NOTE: The drawbar is height adjustable. The drawbar can be rotated 180° to allow the towing eye to be raised.
- Connect the hoses so that:  
Lever 1 - lever back - boom lifts. (Inside lever closest to driver.)  
Lever 2 - lever back - chains feed out the right side. (Outside lever.)
- The hydraulic flow rate should turn the drive shafts 1 turn per second. Many high flow rate tractors have an adjustable control. Use this to reduce the flow to the required rate. If there is no flow adjustment, simply operate the tractor at low rpm.
- Some bales are more difficult than others, however the SL-700 will generally feed these out. If you do experience a problem, try feeding the bale out the other side. This will unroll the bale instead of trying to pull it apart.
- The hydraulic flow should actuate the chains at a smooth, controlled rate i.e. not too jerky or sudden. Familiarise yourself with the hydraulic controls on the machine, using your 2 hydraulic hand controls.



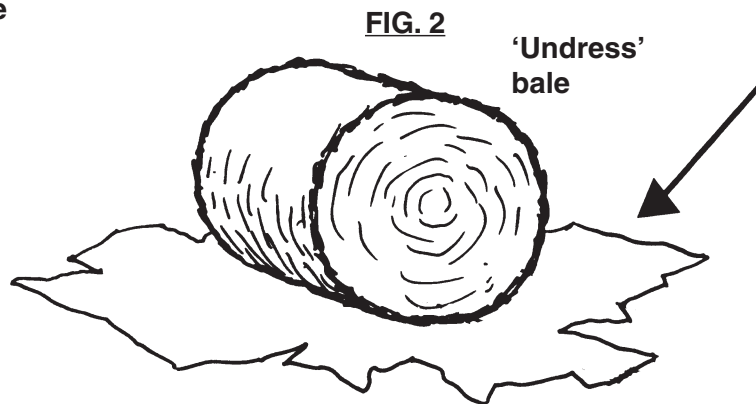
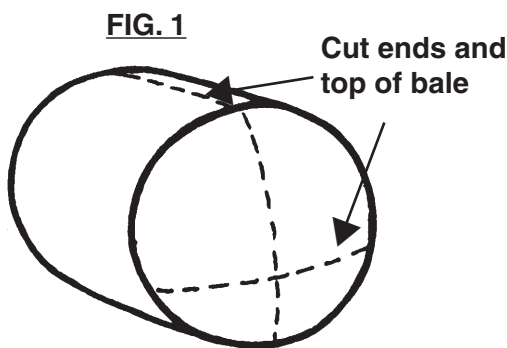
# **OPERATING INSTRUCTIONS**

## **ALL TYPES OF ROUND AND SQUARE BALES**

### **LOADING BALES**

#### **WRAPPED BALES**

- For loading wrapped bales - first remove the plastic wrap only (fig. 1). DO NOT remove net-wrap at this stage.  
NOTE: It does not matter which way the bale has been rolled up.
- Using lever 1, adjust the rear forks height till the top of the tyne frame is just below the top of the bale then back into the bale. (A good rule of thumb is; if the bale is 4' round, drop the rear forks right down. If it is bigger than 4' raise the forks till the top of the tyne frame is 4" below the top of the bale.)
- Still using lever 1 raise the bale up off the ground and over towards the feed unit. To facilitate easy removal of the net on bales with net-wrap we recommend to stop well before (approx 45°) the bale settles on to the feed unit (try not to let the bale start falling apart while removing the net). With the net removed finish lowering the bale onto the feed unit.
- Now withdraw the forks and lower the forks right back down to the ground level. Once you hear the 'clack' of the loading mechanism resetting, you can then readjust the forks to pick up another bale if required.
- Next ALWAYS raise the forks, whether carrying a second bale or not, to the 45° position. (This keeps the forks safely away from animals etc.)



#### **HAY BALES**

- For hay bales, lift the bale toward the feed chamber and remove the strings. Then lower on to the bed.
- Always return the forks back immediately after loading the bale. Lower them right down to the ground, to reset, and then back up to the 45° position, unless loading another bale.
- If loading a second bale, raise the forks to selected bale height, then back the forks into the bale and raise to the 45° position.

## **TRANSPORTING**

- Ensure rear forks are up at a safe height about 45° is ideal when travelling.
- Side bars are available from HUSTLER to keep the bale more secure on hilly country and to keep cattle away from moving mechanism. Order code: SL-SB



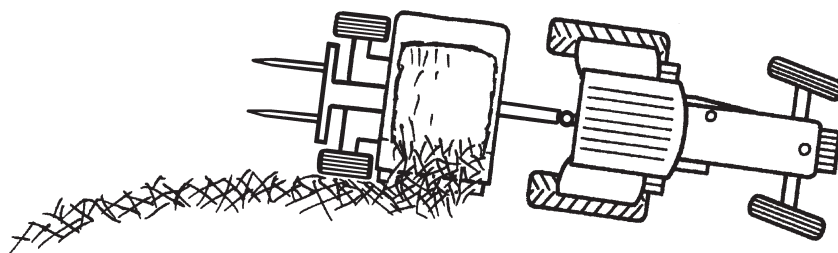
## **FEEDING OUT**

- Keep tractor in a low gear and using lever 2, start feeding the bale. Usually the bale will feed out one way better than the other.



## **TIP**

- Drive in a slight circle. This helps to see the hay feeding onto the ground. Select a higher gear to achieve thinner feed-out line if required.



## **TROUBLE SHOOTING**

**PROBLEM:** *Bale starts falling apart after removing the plastic or the net wrap, even when I try removing it carefully.*

**SUGGESTED REMEDY:**

- Remove the covering just before lowering the bale onto the feed unit.
- For very difficult bales, lower bale onto feed unit and remove the covering around the bale where you can, and collect the rest afterwards.

**PROBLEM:** *The chains won't turn.*

**SUGGESTED REMEDY:**

- A string still left in the bale is wrapping around the shaft causing it to jam - remove the string.
- Hydraulic pressure too low - check the tractor hydraulic pressure.
- Chains may need the links lubricating.

**PROBLEM:** *The bale is dropping too hard onto the feed unit.*

**SUGGESTED REMEDY:**

- Spear into the bale **lower down** before lifting.

**PROBLEM:** *Bales not staying in the feeder.*

**SUGGESTED REMEDY:**

- Slow down the feed bars. They don't need to turn fast.
- Purchase a hillside side bar kit (available from HUSTLER order code: SL-SB)

**PROBLEM:** *Bale rotates but hay will not feed.*

**SUGGESTED REMEDY:**

- Feed bale out the other side so it 'unrolls' correctly.
- Purchase 'aggressive teeth' kit from HUSTLER.
- Bend your existing feed teeth to a more aggressive angle forwards.

**PROBLEM:** *Need to feed square bales*

**SUGGESTED REMEDY:**

- Purchase side bar kit from HUSTLER. (order code SL-SB)





## **PARTS AND SERVICE SECTION**

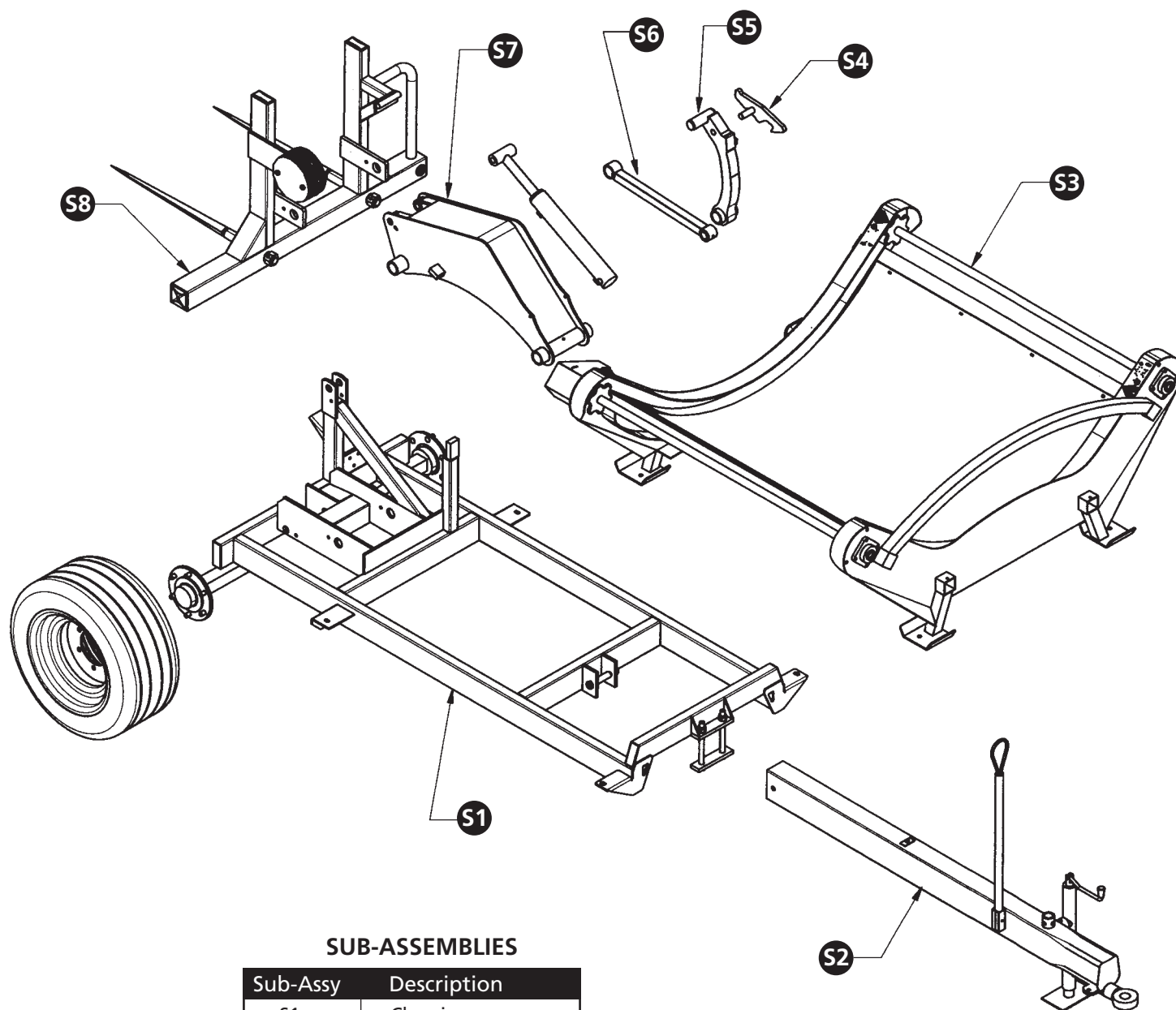
### **PROBLEMS?**

**Contact your local HUSTLER Dealer.**

**They have trained staff to help you.**

**Have this book handy when ordering parts.**

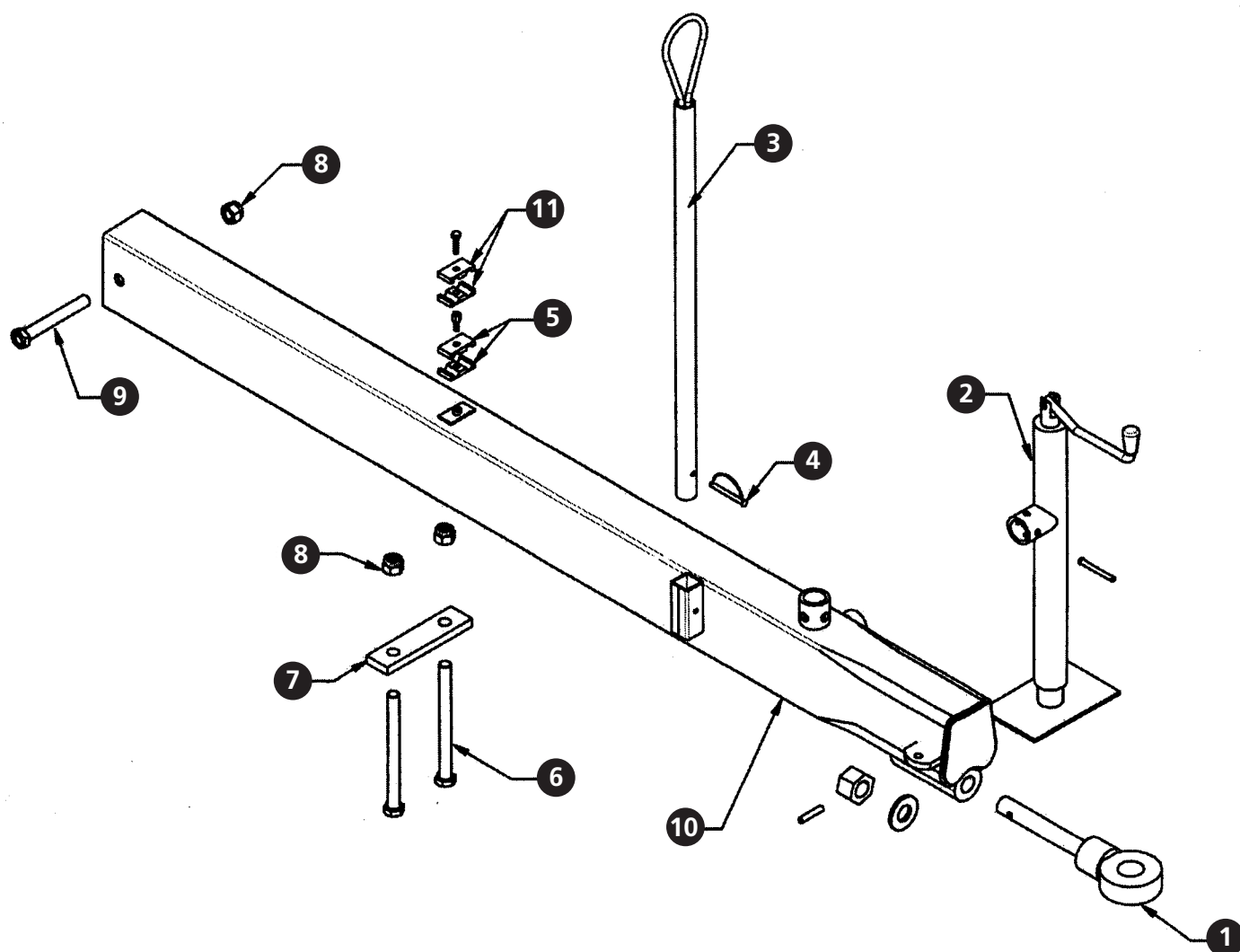




## SUB-ASSEMBLIES

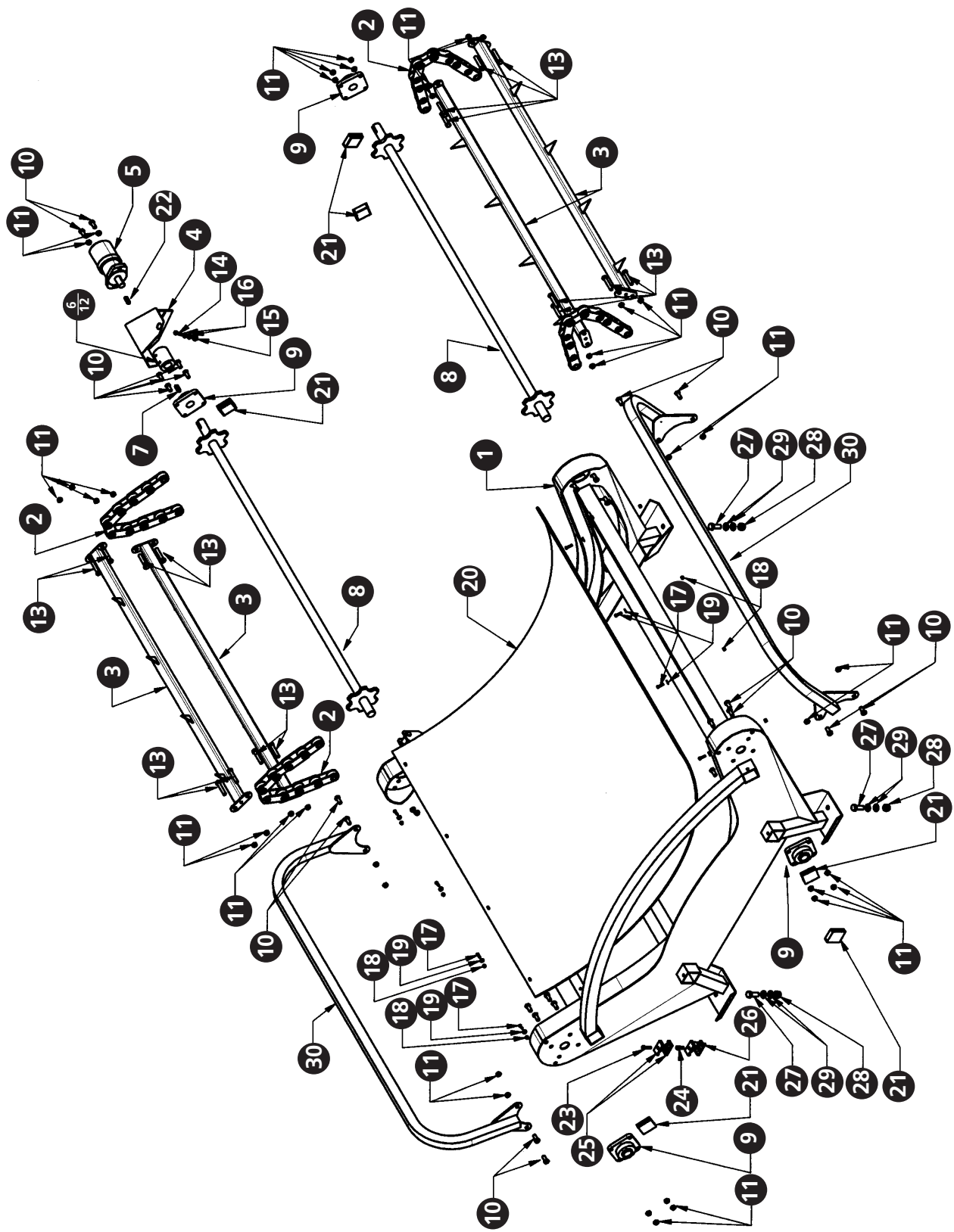
Sub-Assy	Description
S1	Chassis
S2	Drawbar
S3	Feeder
S4	Hook
S5	Latch Arm
S6	Top Link Arm
S7	Boom
S8	Tyne Frame

# DRAWBAR ASSEMBLY



Item No.	Description	Qty	Part Code	Notes
1	Towing Eye. Incl. Washer, Nut & Locking Pin	1	CH - 355	
2	Jack. Includes Pin	1	CH - 183	
3	Hose Needle	1	CH - 358	
4	Needle Clip AG 256	1	CH - 233	
5	Hose Clamp 3/8"	1	CH - 309	
6	Bolt M20 X 230	2	CH - 90	
7	Clamp Plate 50 X 16	1	CH - 273	
8	Nyloc Nut M20	3	CH - 215	
9	Bolt M20 X 150	1	CH - 207	
10	Drawbar SA-16	1	CH - 3	
11	Hose Clamp 1/4"	1	CH - 356	

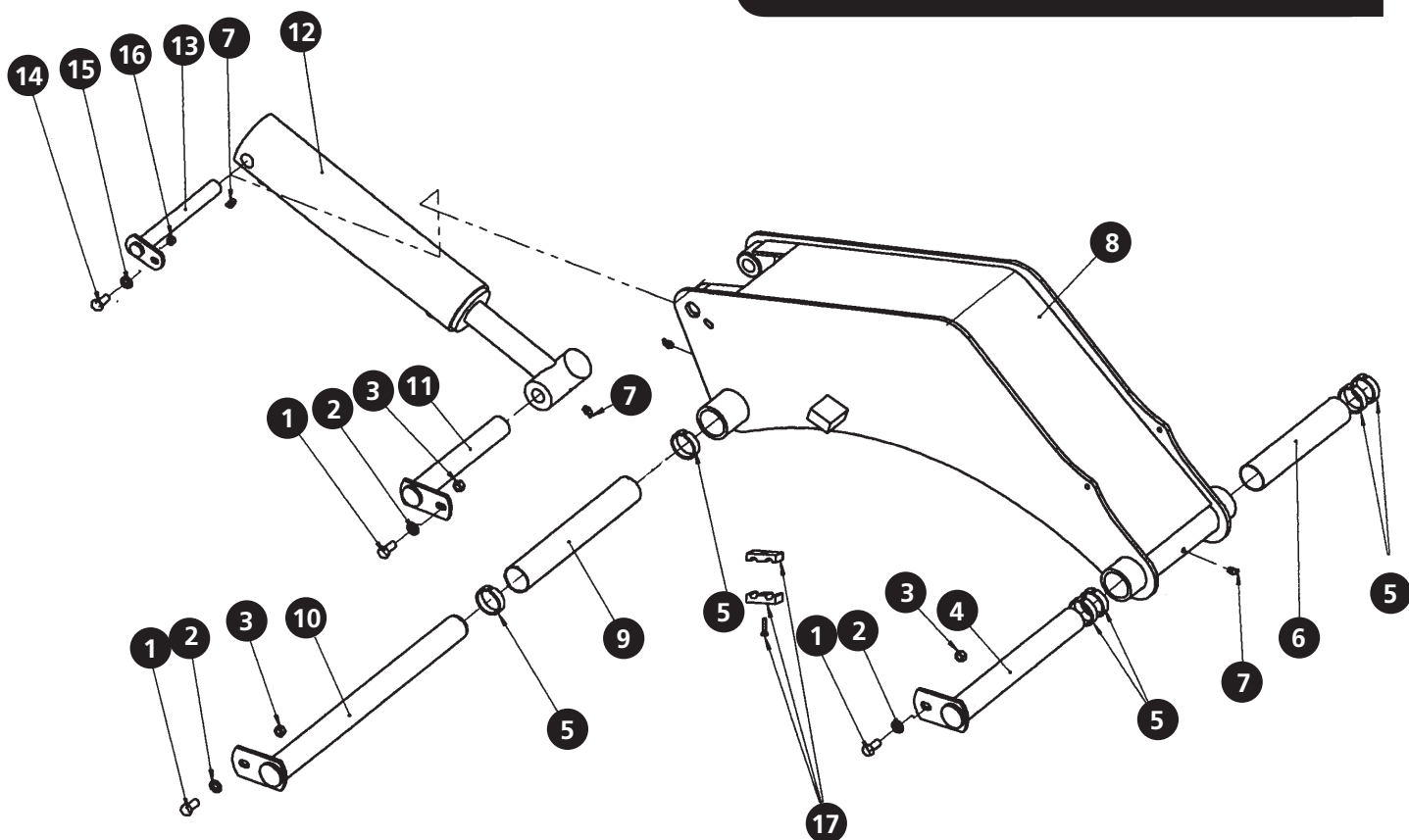
# FEEDER ASSEMBLY



# FEEDER ASSEMBLY

Item No.	Description	Qty	Part Code	Notes
1	Feeder Mainframe	1	SL - 805	
2	Feed Chain	2	SL - 810	
3	Feed Bars	15	SL - 813	
4	Motor Torque Arm	1	SL - 815	
5	Hydraulic Motor JH320	1	SL - 816	
6	Motor Drive Coupling	1	SL - 818	
7	Spocket Key	1	CH - 154	
8	Drive Shaft	2	SL - 819	
9	4 Bolt Flange Bearing	4	CH - 152-153	
10	Bolt M12 X 35mm	26	CH - 210	
11	M12 Nyloc Nut	90	CH - 216	
12	Motor Grub Screw	4	CH - 125	
13	Bolt M12 X 65mm	64	SL - 809	
14	Bolt M8 X 35mm	1	SL - 807	
15	M8 Nyloc Nut	1	CH - 218	
16	M8 Washer	2	CH - 223	
17	SS Cap Screw M6 X 30mm	8	CH - 226	
18	M6 Nyloc Nut	8	CH - 219	
19	M6 HD Washer	8	SL - 808	
20	Plastic Floor Sheet	1	SL - 826	
21	Plastic RHS Cap (65 X 65)	6	SL - 825	
22	Motor Key JH320	1	SL - 817	
23	Bolt M8 X 35mm	1	SL - 807	
24	Half Bolt M8	1	SL - 806	
25	Twin Hose Clamp 1/4"	1	CH - 356	
26	Twin Hose Clamp 3/8"	1	CH - 309	
27	Bolt M16 X 40mm	4	SL - 830	
28	M16 Nyloc Nut	4	SL - 831	
29	M16 Flat Washer	8	SL - 832	
30	Side Bar	2	SL - 812	
31	Motor Hose	2	SL - 802	Not Shown

# BOOM ASSEMBLY

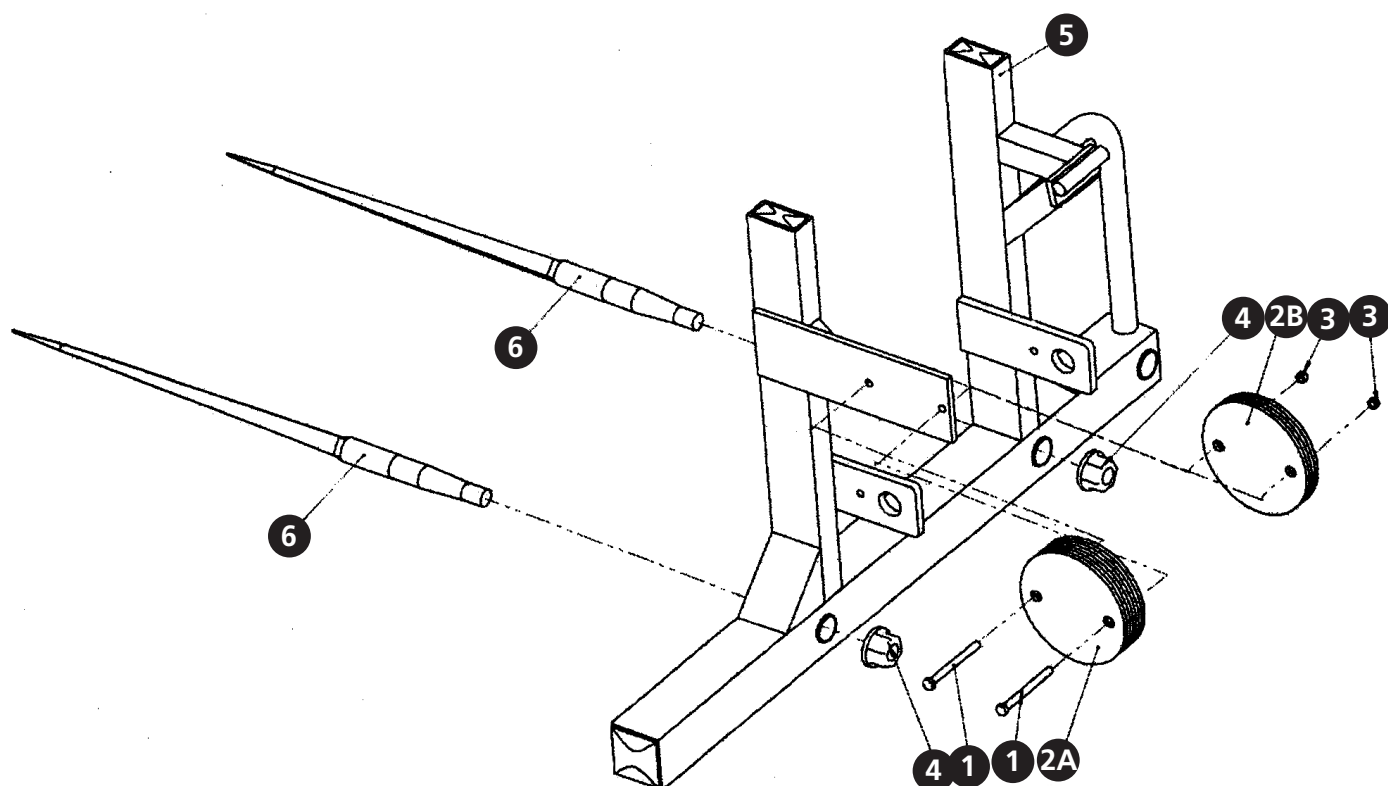


## SUB-ASSEMBLY

Item No.	Description	Qty	Part Code	Notes
1	Bolt M10 X 40mm	3	CH - 211	
2	Washer M10	3	CH - 222	
3	Nyloc Nut M10	1	CH - 217	
4	Pin 1 3/4 X 340mm	1	CH - 365P	
5	Wear Ring	5	CH - 176	
6	Aluminium Spacer X 274mm	1	CH - 179	
7	Grease Nipple 1/8 BSP ST	4	CH - 228	
8	Boom SA9	1	CH - 11	
9	Aluminium Spacer X 339mm	1	CH - 180	
10	Pin 1 3/4 X 524mm	1	CH - 364P	
11	Pin 1 1/4 X 248mm	1	CH - 366P	
12	Boom Cylinder	1	CH - 164	
13	Pin 1 X 220mm	1	CH - 368P	
14	Bolt M8 X 30mm	1	CH - 213	
15	Washer	1	CH - 223	
16	Nyloc Nut	1	CH - 218	
17	Twin Hose Clamp 1/4"	1	CH - 356	
18	Boom Ram Hoses	2	SL - 801	Not Shown

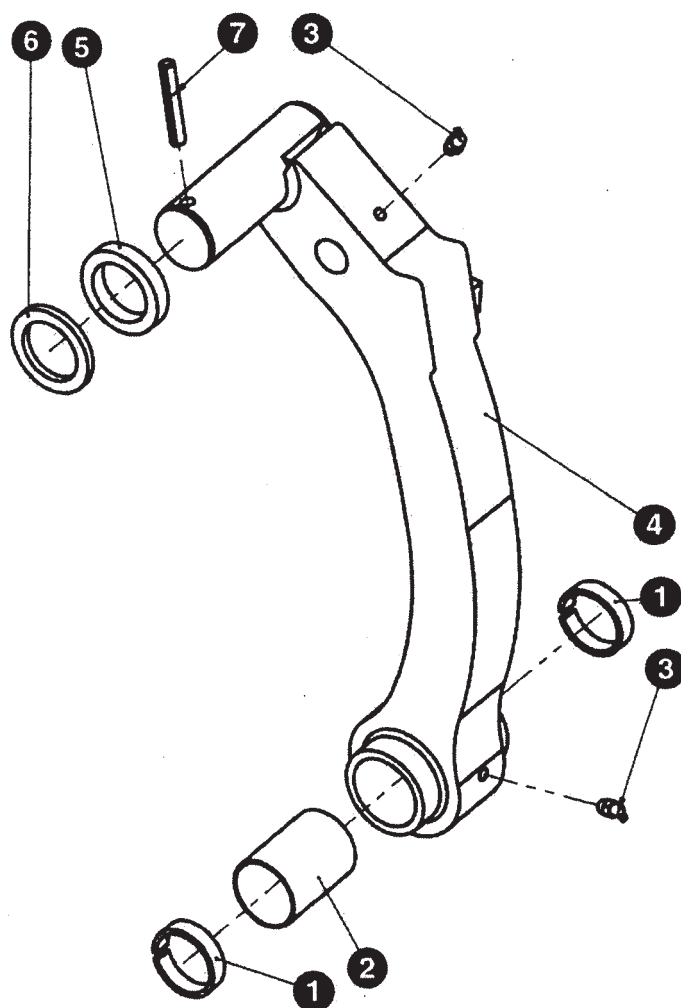


# TYNE FRAME ASSEMBLY



Item No.	Description	Qty	Part Code	Notes
1	Counterweight Bolt M12 X 130	2	CH - 208	
2	Counterweight	12	CH - 331	
3	Nyloc Nut M12	2	CH - 216	
4	Tyne Nut M28	2	CH - 188N	
5	Tyne Frame Assembly SA10	1	CH - 12	
6	Tyne X 980 OA	1	CH - 188	

# LATCH ARM ASSEMBLY

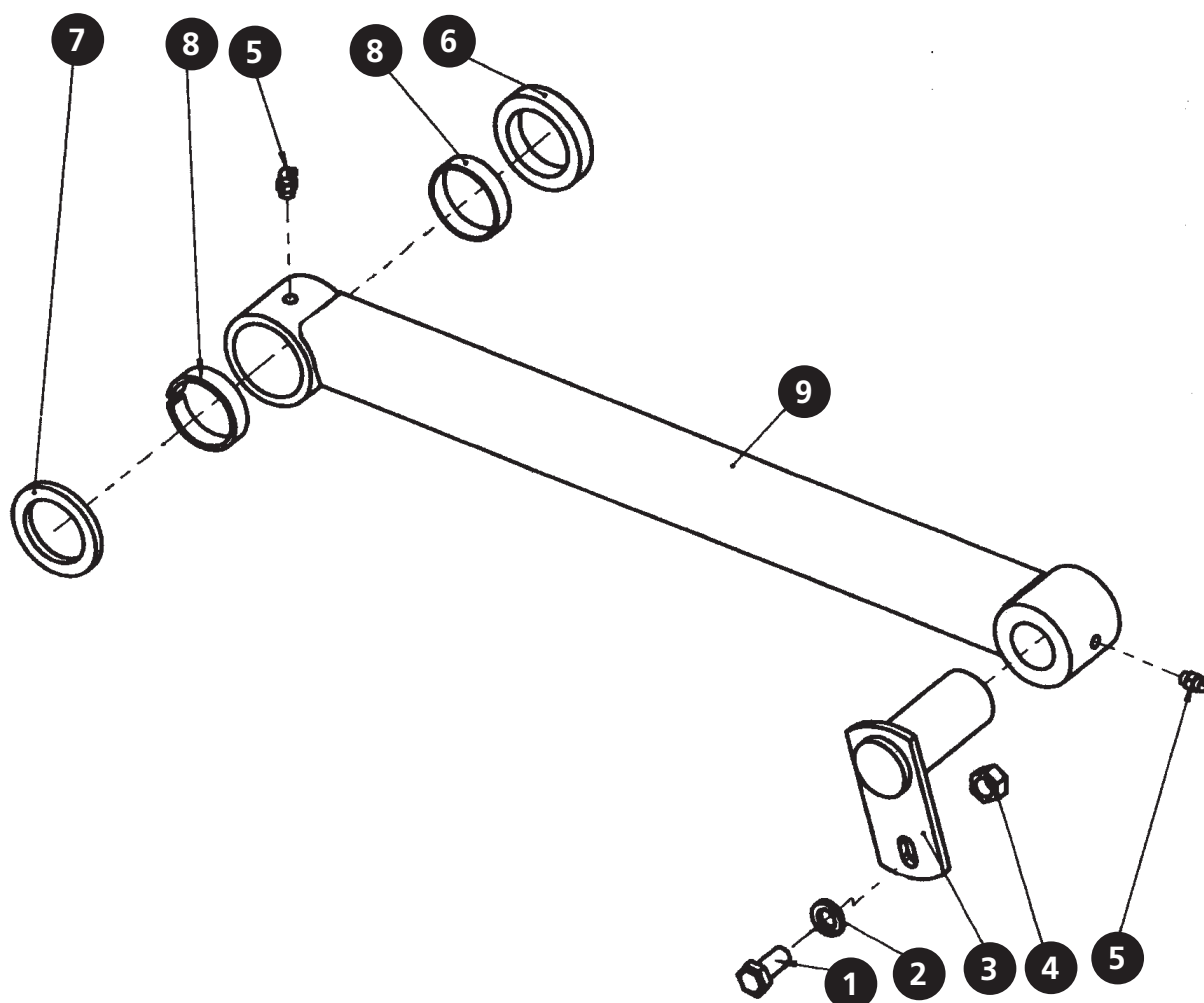


## SUB-ASSEMBLY

Item No.	Description	Qty	Part Code	Notes
1	Wear Ring	2	CH - 176	
2	Aluminium Spacer X 44mm	1	CH - 178	
3	Grease Nipples 1/8 BSP ST	2	CH - 228	
4	Latch Arm SA3	1	CH - 340	
5	Spacer X 12mm	1	CH - 181	
6	Spacer X 6mm	1	CH - 182	
7	Rollpin 10 X 65mm	1	CH - 205	



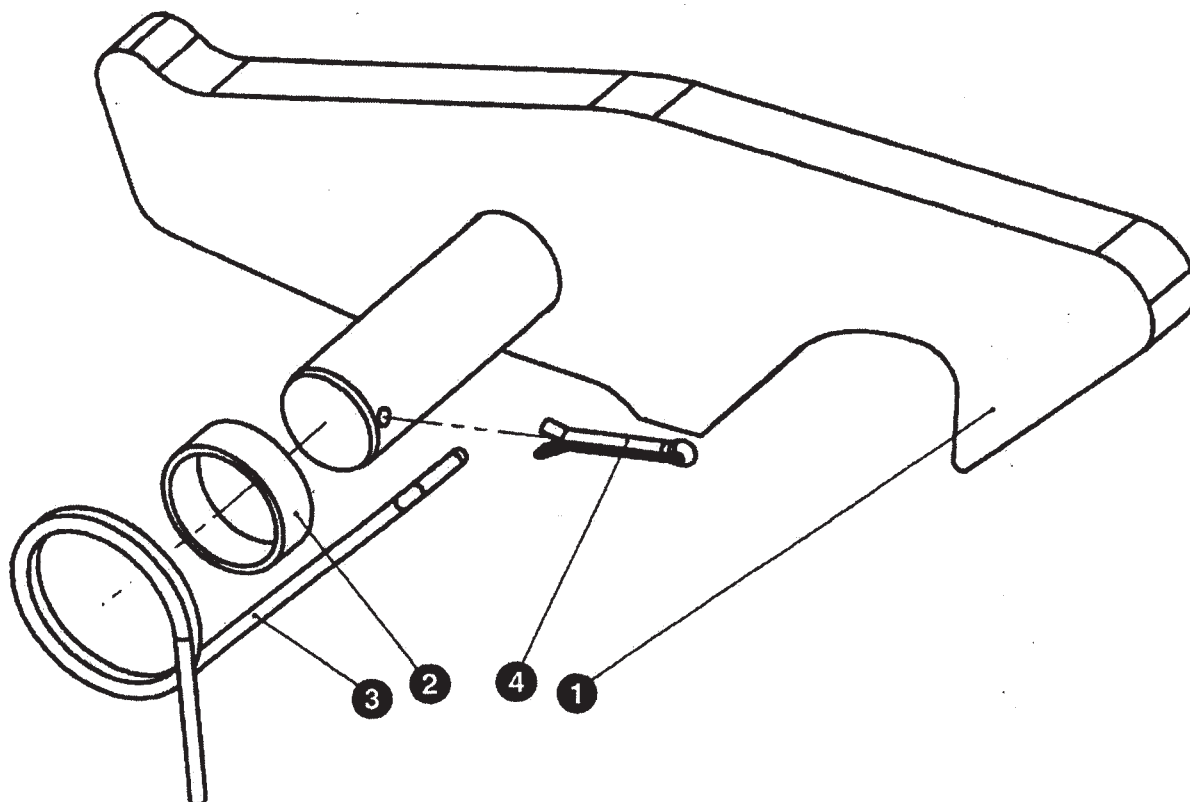
# TOPLINK ARM ASSEMBLY



## SUB-ASSEMBLY

Item No.	Description	Qty	Part Code	Notes
1	Bolt M10 X 40mm	1	CH - 211	
2	M10 Washer	1	CH - 222	
3	Pin	1	CH - 367P	
4	M10 Nyloc Nut	1	CH - 217	
5	Grease Nipple 1/8 BSP	2	CH - 228	
6	Spacer 12mm Wide	1	CH - 181	
7	Spacer 6mm Wide	1	CH - 182	
9	Wear Ring	2	CH - 176	
10	Toplink Arm SA2	1	CH - 336	

## HOOK ASSEMBLY



Item No.	Description	Qty	Part Code	Notes
1	Hook	1	CH - 348	
2	Spacer	1	CH - 349	
3	Spring	1	CH - 192	
4	Split Pin	1	CH -227	

## **OPTIONS**

### **STANDARD EQUIPMENT**

#### **STANDARD WHEEL ASSEMBLY**

10.0 / 75-15.3 flotation tyre.

Part Code: CH-186



### **OPTIONAL EQUIPMENT**

#### **EXTRA WIDE FLOTATION TYRES**

Ideal for softer terrain.

13.0 / 55-16

Order Code: CH4WW



#### **DIRECTIONAL TRACTOR-GRIP TYRES**

Ideal for hillsides where more grip is required.

10.0 / 75-15.3

Order Code: CH4TG



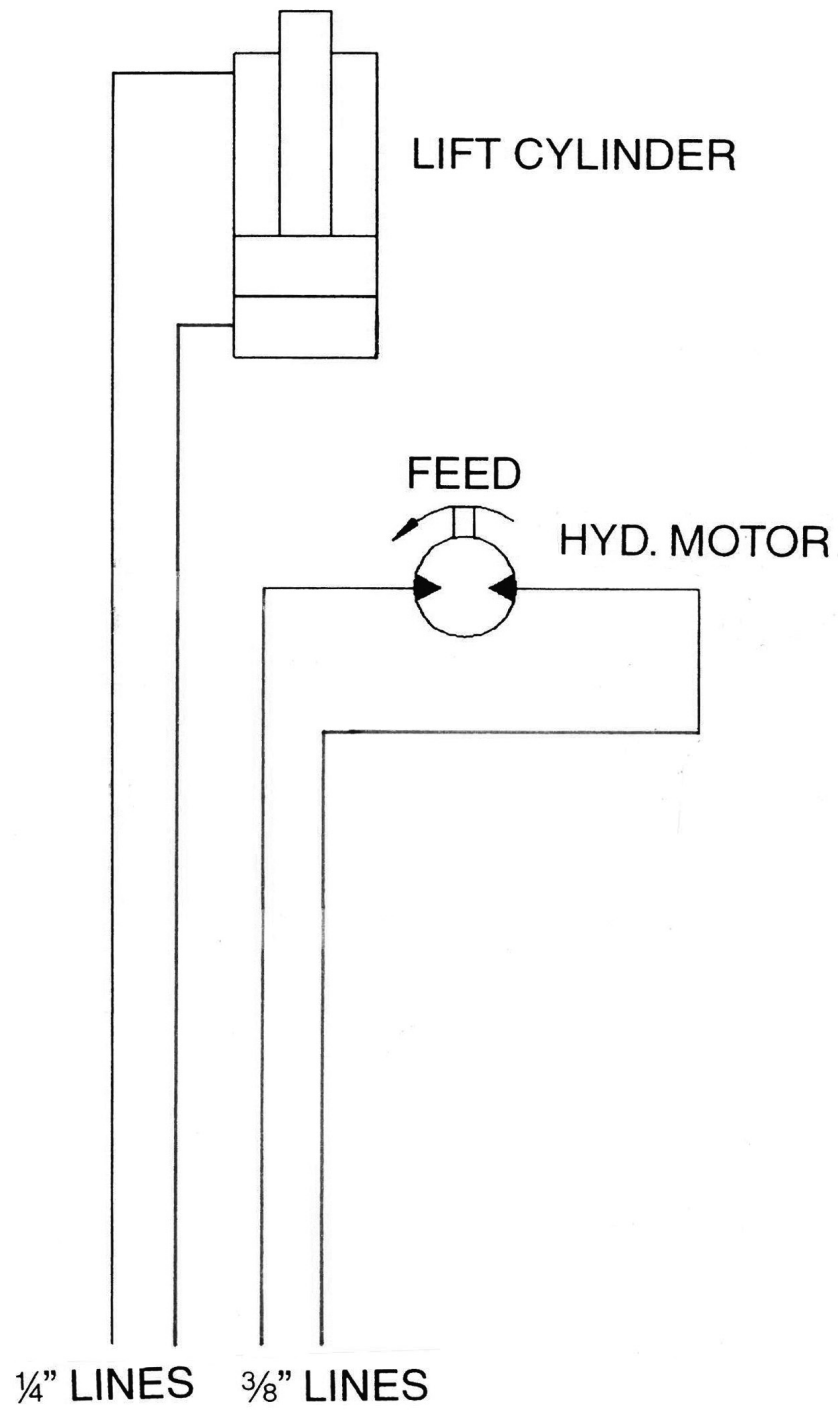
#### **SIDE BARS**

For keeping the bale more secure in the feeder and assists in square bale feeding.

Order Code: SL-SB



## **HYDRAULIC SCHEMATIC**



## **WARRANTY**

### **“SL-700” BALE FEEDER**

The goods specified in the Instruction Manual as designed and supplied by the manufacturer are warranted against faulty workmanship and defective materials for a period of 12 months from the date of purchase.

*Such warranty is subject to the following conditions:*

1. This warranty covers the repair or replacement of parts or machinery sold by the manufacturer and damaged as a result of the faulty workmanship or materials in such parts or machinery. It does not extend to any other loss or damage including consequential loss or damage or loss to other property or persons.
2. Without limiting the generality of paragraph 1 above, this warranty does not cover the following:
  - (a) Travel expenses.
  - (b) Damage caused by accident, misuse or abuse.
  - (c) Damage to any goods which have been altered or modified by someone other than the manufacturer or its authorised agent.
  - (d) Damage or loss to the goods due to their unsuitability for any particular use or for using with any particular tractor except where such use or tractor had been specifically approved by the manufacturer.
  - (e) Damage or loss where the fitting and installation of the goods were not carried out by the manufacturer or its authorised dealer.
3. Procedure for recovery under warranty. No loss or damage will be covered by this warranty unless the following procedure is followed by the purchaser;
  - (a) The loss or damage should be reported immediately to the dealer (who will contact the manufacturer who will advise whether it is covered by the warranty and undertake the necessary action).

*“This warranty shall be interpreted according to the laws of New Zealand and the parties agree to submit to the jurisdiction of the Courts of New Zealand.”*



**HUSTLER EQUIPMENT SALES**

***“SL - 700”  
BALE FEEDER***



***HUSTLER EQUIPMENT SALES***

PO Box 2127,  
1416 Omahu Road, Hastings, 4153,  
New Zealand. Phone +64 6 879 7926

