

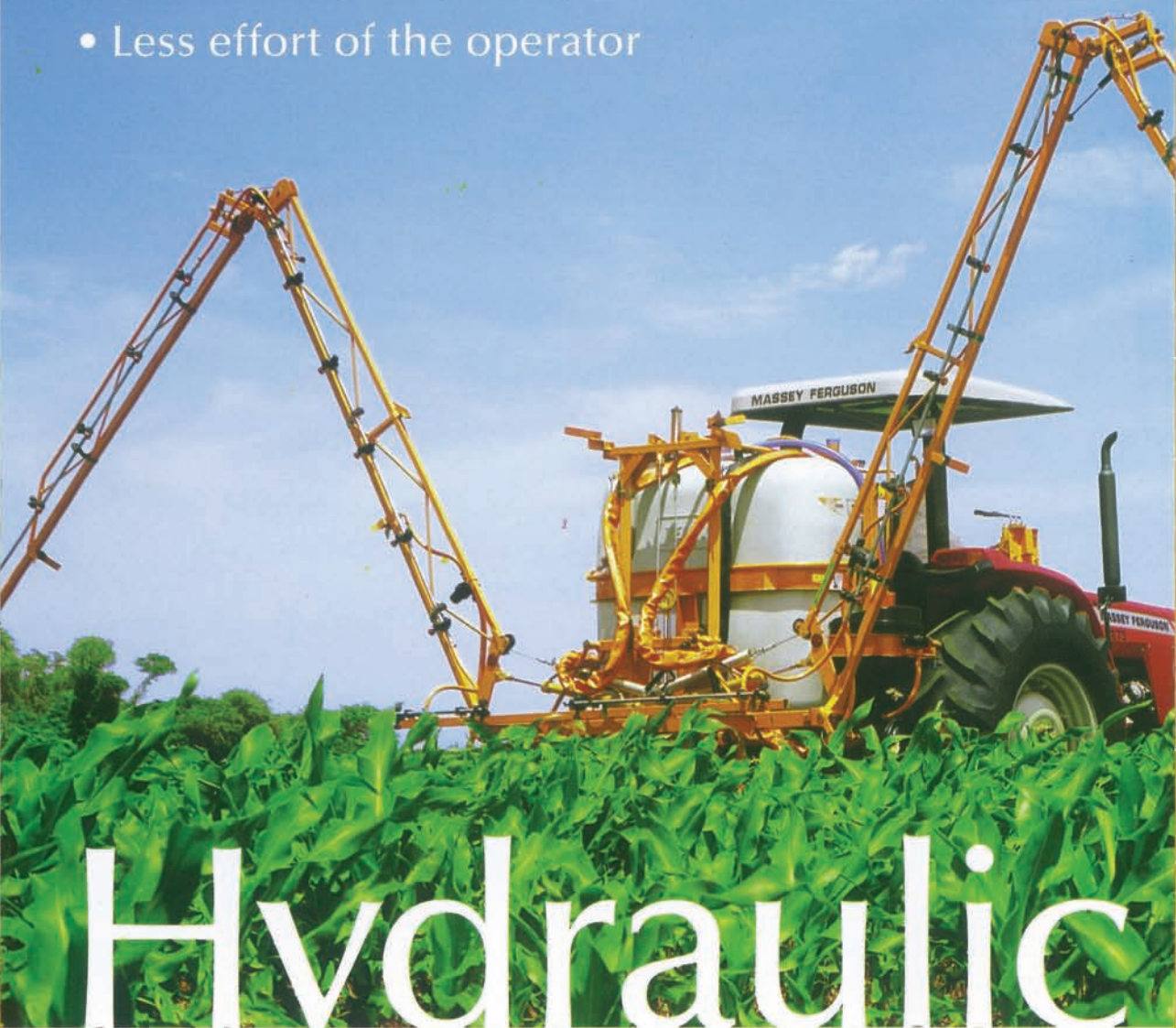


CONDOR 800 AM-12/14

Agile, Efficient and Economical.
Ideal for Medium Size Farms.



- Ease of operation
- Reduced maneuvering time
- Increased quality and precision in the application
- Less effort of the operator



Hydraulic

Quality in the Spraying and High Yield.

Condor 800 AM-12/14 is provided with 800-liter highly resistant polyethylene tank of easy cleaning, and 12 or 14-meter fully hydraulic booms that ensure easier maneuvering. Adjustable spraying height between 0.65 to 1.42 meters. Suspension with springs to provide more stability to the boom, improved spraying and higher daily production.

JP-75 or 100 pump with ceramic sleeves to resist abrasion and corrosion. Easy maintenance.

Various spray control options to ensure an efficient spraying.

Three-layer painting for higher resistance to bad weather and chemical corrosion.

Condor 800 AM-12/14

Daily Production – Condor 800 AM-14 (0.50-m nozzle spacing)

WORKING SHIFT	WORKING SPEED (km/h)	SPRAYING VOLUME (L/ha)								
		100			150			200		
		FILLING OPERATION TIME (minutes)								
		10	20	30	10	20	30	10	20	30
		DAILY PRODUCTION (hectares)								
6 hours	4	25	22	20	24	20	18	22	19	16
	6	35	31	27	33	27	23	31	24	20
	8	45	38	32	41	32	27	38	28	23
8 hours	4	33	30	27	31	27	24	30	25	22
	6	47	41	36	44	36	31	41	32	27
	8	60	50	43	54	43	36	50	38	30
10 hours	4	41	37	34	39	34	30	37	31	27
	6	59	51	45	55	45	38	51	40	33
	8	75	63	54	68	54	44	63	47	38
12 hours	4	50	45	41	47	41	36	45	38	32
	6	71	61	54	66	54	46	61	54	40
	8	90	75	65	82	65	53	75	57	45



Boom Breakaway

In case of impacts against obstacles, the boom breakaway ensures an extra protection, thus avoiding damages to the equipment.



Boom

Bijet or Monojet Nozzle Holders

Made of polyethylene with non-drip valve, which avoids waste of chemicals. 0.35-m or 0.50-m nozzle spacing. Hose or stainless steel nozzle holder branch with drain for quick cleaning.



Suspension

Absorbs the impacts and provides excellent stability to the booms, keeping them parallel to the ground even when overcoming obstacles.



Mastermark Row Marker (optional)

Foam flocks mark the spray swath, thus guiding the operator when spraying back and preventing skips or overlapping.



JACTO



Polyethylene Tank

Higher Daily Production, Economy and Tranquility.

The **Condor 800 AM-12/14** has a 800-liter polyethylene tank with more resistance against impacts. Its plastic structure of easy cleanness does not have porosity, thus preventing the chemicals from accumulating in the tank and ensuring longer useful life with lower maintenance costs. With level indicator, it provides perfect view of the chemical level inside the tank and more accuracy in the refilling stops.



Chemical Mixer with Container

Rinse Nozzle (optional)

Made of polyethylene and with 23-liter capacity, it practically and safely mixes liquids or powders with the water of the 800-liter tank providing a homogenous mixture. This way you can have the best use of the chemicals with no risk to the operator, and environment.

The rinse nozzle cleans the chemical containers under pressure with water from the main tank, incorporating the chemical residues with the mixture in the 800-liter tank.



Clean Water Tank

Made of polyethylene with 30-liter capacity, it is incorporated to the main tank. It provides the triple wash of chemical containers, leaving them ready to be discarded.

Hygiene and protection to the operator and environment.



Chemical Agitator (optional)

Mechanical agitation of the chemical with 3 polyethylene blades. Always homogenous mixture. High resistance against corrosion.



Chemical Container Rinse Nozzle (optional)

Provides the pressure-wash of chemical containers, incorporating the chemical residues to the mixture in the tank, and leaving them ready for the triple wash. Best use of chemicals. Safe to the operator and environment.

800 liters



Filtering System

It is comprised of: main filter (FVS 100), stainless steel mesh, shut-off valve, in-line filters and filters in the nozzles. Work free of impurities and without clogging. Uniform spraying.



Filler Unit (optional)

Available models: JP-75 for 225 L/min or JP-100 for 344 L/min. It provides a quick filling operation without risks of contamination. This system prevents the chemicals from returning to the water reservoirs.



JP-75 or JP-100 Pump

Designed to work under high pressure, it provides an excellent spraying volume. Pistons with ceramic sleeves resist to chemical abrasion. Durability, robustness and low maintenance.
JP-75 for 75 L/min at 540 rpm.
JP-100 for 100 L/min at 540 rpm.

Electronics



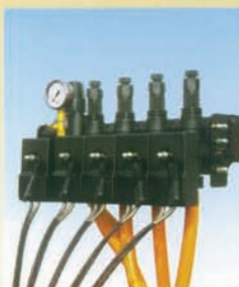
Standard 2 or 4-way VAR Control and Hydraulic Boom Control

Control with double spring for higher sensibility of adjustment and quick relief valve to avoid overcharge of the circuit. The hydraulic control allows the operator to easily unfold and fold the booms.



Standard 2 or 4-way Masterflow Control and Hydraulic Boom Control

It ensures constant application rate regardless of change in the tractor speed within the same gear. The working pressure on the nozzles also remains constant regardless of the number of boom sections turned off. The hydraulic control allows the operator to easily unfold and fold the booms.



Cable 2 or 4-way Masterflow Control and Hydraulic Boom Control

Mounted in a convenient position for the operator, it provides more agility, comfort and high productivity.



Jacto

- *Easy and practical operation*
- *Saves time and chemical*

The **Condor 800 AM-12/14** was specially developed for the farmer who seeks higher daily production, efficient spraying and protection to the crop, from the planting to the harvest.

The spraying assembly with 12 or 14-meter fully hydraulic boom and spray controllers reaches excellent results in the disease control.



Electric Masterflow Control



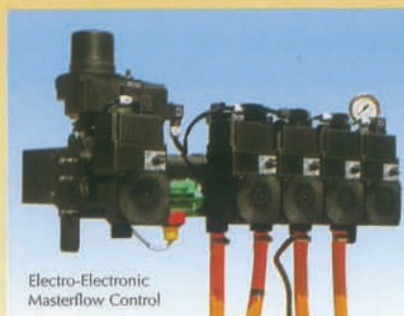
JEC-3700 Electric Control

JEC-3000 Electric Control

Electric.

Electric Masterflow Control and JEC-3700 and JEC-3000 Electric Controls

Allow to move the booms (JEC-3700), as well as to turn on and off the nozzles (JEC-3000).



Electro-Electronic Masterflow Control



JEC-3700 Electric Control



JSC-5000 Sprayer Control

Electro-Electronic.

Electro-Electronic Masterflow Control with JSC-5000 Sprayer Control and JEC-3700 Electric Boom Control

The JSC-5000 programs and maintains constant the application rate (L/ha), regardless of change in tractor speed. It displays the operating time, distance traveled, sprayed liters per minute, total and partial sprayed areas, and total and partial sprayed volumes. It is equipped with switch for manual operation. It allows to turn on and off the nozzles. With the JEC-3700 electric control, the operator can move the booms.



Electronic Level Indicator.

Warns through a sound signal and a warning in the display of the JSC-5000 when the chemical is finishing, always providing the exact time for refilling stops.

Only for **Condor 800 AM12/14** equipped with electro-electronic control.



Jacto.

Creating solutions to ensure economy and improve productivity to the farmers since 1948.

Quality recognized in more than 80 countries.

High Quality Components Ensuring the Equipment Durability

TECHNICAL SPECIFICATIONS	CONDOR 800 AM-12 or AM-14
Weight	560 Kg (Condor 800 AM-14)
Dimensions	
Length	1.48 m
Height	3.27 m
Width	2.20 m
Tank	
Capacity	800 liters
Material	Polyethylene
Level indicator	Hose attached to the tank
Booms	
Length	12 or 14 meters
Minimum spraying height	0.65 m
Maximum spraying height	1.42 m
Nozzle Holder	
Model	Monojet or Bijet
Nozzle spacing	0.35 or 0.50 m
Quantity	35 or 26 (12 meters) – 41 or 29 (14 meters)
Nozzles fitted	JA-2/AXI-02
Pump	
Model	JP-75 or JP-100
Flow rate at 540 rpm	75 L/min or 100 L/min
Maximum working pressure	300 psi
Pressure Gauge	Extended scale with glycerin
Spray Control	
VAR/Masterflow	Standard/cable/electric/electro-electronic
Chemical Mixer with Container Rinse Nozzle	23-liter capacity
Chemical Agitation	Hydraulic or mechanic
Filter	FVS-100 – 60 mesh
In-Line Filter	1 for each control outlet – 80 mesh

Jacto reserves the right to change its products without prior notice. 10/2004 Always read the operator's manual before operating the equipment.



Jacto people are committed to serve the farmer.

Rua Dr. Luiz Miranda, 1650 - 17580-000 - Pompéia - SP - Brazil - Tel: +55 14 3405 2100 - Fax.: +55 14 3452 1306 - E-mail: export@jacto.com.br

www.jacto.com.br